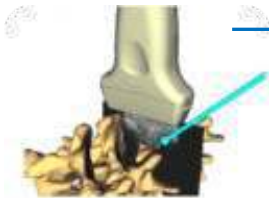


Installing software



SlicerIGT Tutorial Series



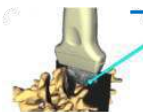
Two separate applications

- **PLUS:** Software that communicates with hardware (scanners, trackers, etc.) and relays data to other applications (e.g. 3D Slicer). PLUS also comes with algorithms and small applications for data processing.

Read more about PLUS: www.plustoolkit.org

- **3D Slicer (Slicer):** Application with many data processing algorithms and visualization features. Has an extension mechanism that allows development of procedure-specific applications.

Read more about Slicer: www.slicer.org





Software needs based on use case

optional

required

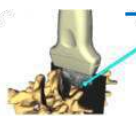
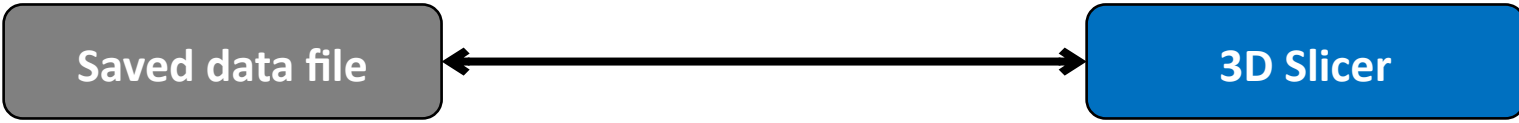
Real devices (e.g. trackers, ultrasound, etc.)



Replay saved data to simulate devices



Load saved data directly into Slicer (no PLUS)



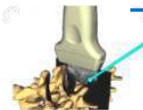
Prerequisites

- Download the SlicerIGT-Data folder from the SlicerIGT tutorial website:

<http://www.slicerigt.org/wp/user-tutorial/>

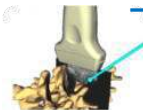
- Unzip SlicerIGT-Data in your home folder.

Note: This tutorial was tested only on Windows. It is possible to follow all steps on Linux and Mac operating systems but specific screenshots are not added, so you may need to figure out the differences yourself.



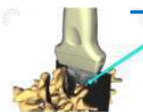
Install the 3D Slicer application

- Visit: <http://download.slicer.org/>
- Download 3D Slicer version 4.11 or later.
 - Note: Some functions used in this tutorial are not available in earlier versions.
 - Run the installer and accept all default options when asked by the installer.



Intall PLUS (optional)

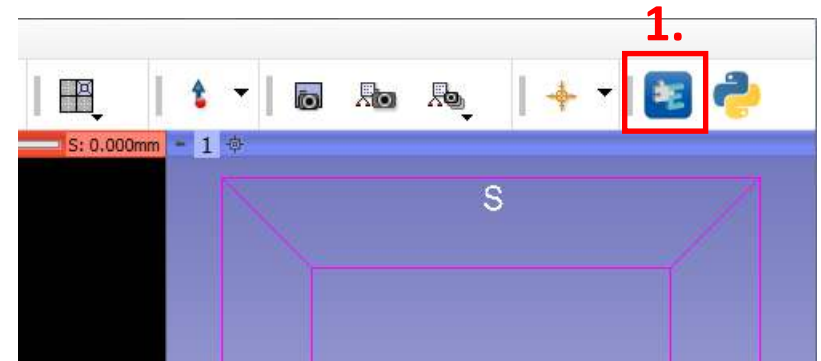
- Visit: <http://plustoolkit.org/> and click **Downloads**
- Download the latest stable release of PLUS:
 - **PlusApp_2.6...-Win32.exe** – Typical for most users
 - **PlusApp_2.6...-Win64.exe** – 64-bit version. Can process large data. (E.g. for reconstruction of large ultrasound volumes.) But cannot connect to some 32-bit-only hardware devices.
 - **PlusApp_2.6... -Telemed...exe** – Supports specific hardware, e.g. Telemed ultrasound and MicronTracker.
- Install PLUS using the downloaded installer, accept all default options.



Install Slicer extensions

1. Open the Slicer Extension Manager
2. Click Install for the following extensions :

- SlicerOpenIGTLink
- SlicerIGT
- SlicerIGSIO
- SlicerJupyter



3. Restart Slicer

2.



SlicerOpenIGTLink
Junichi Tokuda (SPL), ...



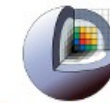
INSTALL



SlicerIGT
Tamas Ungi (Queen's U...)



INSTALL



SlicerIGSIO

SlicerIGSIO
Kyle Sunderland (Perk...)



INSTALL



SlicerJupyter
Andras Lasso (PerkLa...)



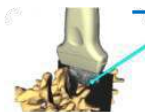
INSTALL

Note: During *SlicerIGSIO* installation, you will also need to agree to install **Sequences**

3.

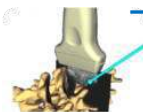
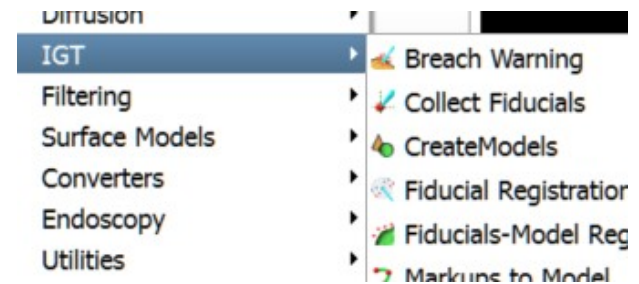
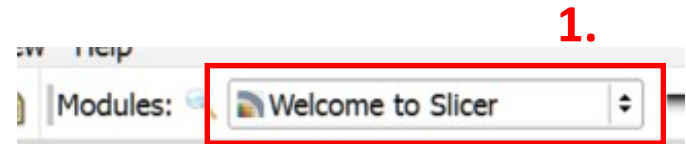
Restart

Close







Check successful installation

- If extensions were installed successfully, you should see new modules in the Module browser, under the IGT category, a new “Sequences” category.



How to access earlier Slicer builds

- Slicer is a continuously evolving software. For some tasks, you may need a build from a specific date.
- Earlier Slicer builds are accessible from the Slicer Cdash: <http://slicer.cdash.org/index.php?project=Slicer4>
- Click on Calendar menu to select a specific date
- Click on yellow package to download the installer

Build Name	Update	Configure		Build	
	Files	Error	Warn ▼	Error	Warn
Windows-VS2013-64bits-QT4.8.7-PythonQt-With-Tcl-NoCLI-Release  	2	0	2	0	
SnowLeopard-clang-3.1-64bits-QT4.8.7-NoVTKDebugLeaks-Release  	2	0	0	0	

